

MOTOTRBO™ CAPACITY MAX









HIGH CAPACITY, COVERAGE AND CONTROL

The next generation of trunking has arrived. MOTOTRBO Capacity Max blends real-world experience with technological innovation to deliver a communications solution that's tailor-made for your organisation.

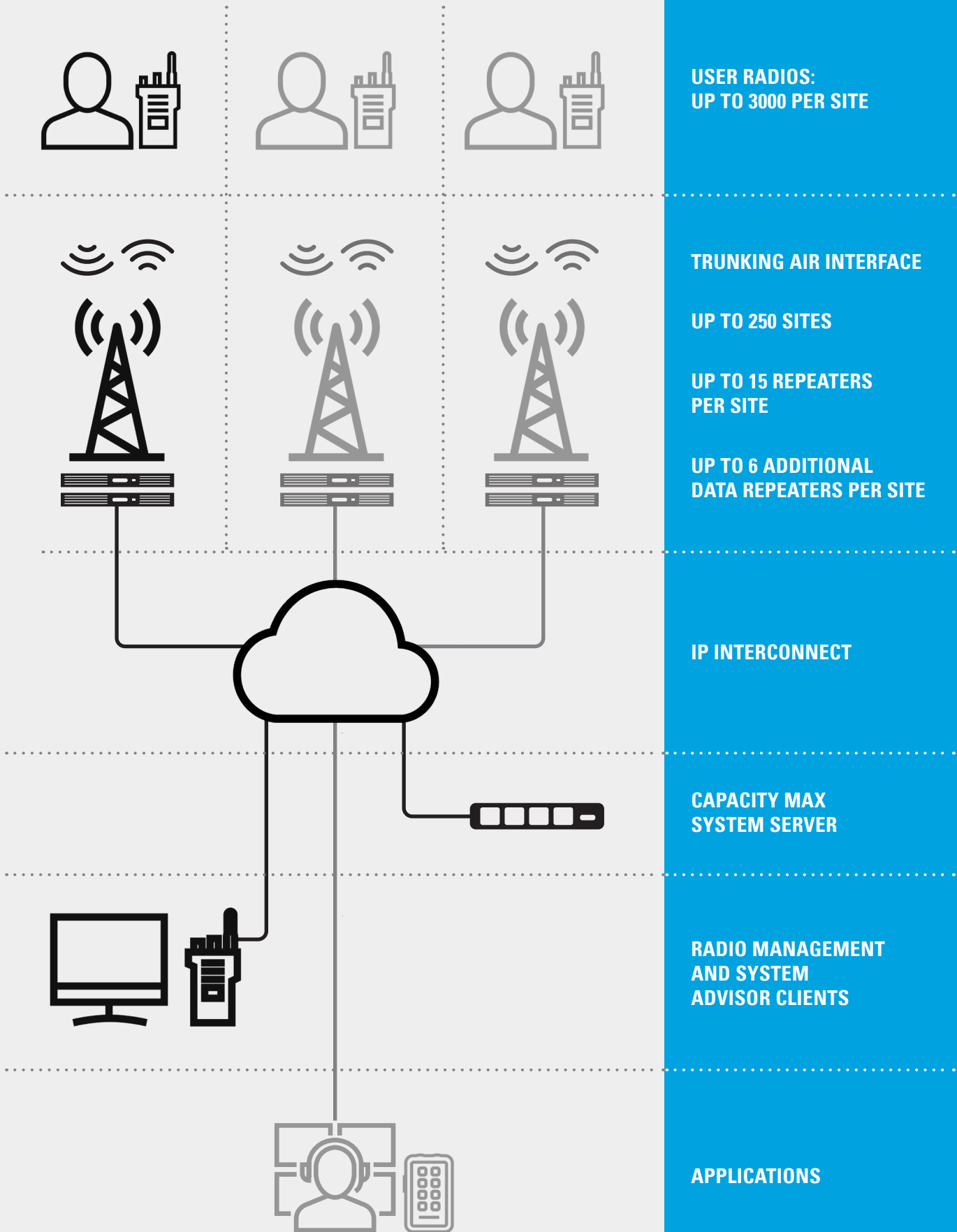
Your communications system is at the heart of your organisation: keeping your workers productive and maintaining safety at all times. So when you're a large organisation with sophisticated requirements and the highest standards, you should choose the best technology and the most comprehensive solution: MOTOTRBO Capacity Max.

Capacity Max is a trunked radio system with a dedicated control channel at every site. The centralised architecture reduces deployment complexity and operational cost, while increasing flexibility and scalability. The system offers a crisp, responsive user experience, with high security and reliability. A suite of built-in tools and applications gives you complete control and visibility of your system's operation.

MOTOTRBO SYSTEM TYPES

| CONVENTIONAL | IP SITE CONNECT | CAPACITY PLUS | CAPACITY MAX |
|--|--|---|--|
| NON-TRUNKING | | TRUNKING | |
| BASELINE CAPACITY AND COVERAGE | ENHANCED COVERAGE | COST-EFFECTIVE COVERAGE AND CAPACITY | CAPACITY, COVERAGE AND CONTROL |
|  SINGLE SITE |  UP TO 15 SITES |  UP TO 15 SITES |  UP TO 250 SITES |
|  UP TO 200 USERS |  UP TO 200 USERS |  UP TO 1600 USERS PER SITE |  UP TO 3000 USERS PER SITE |

SYSTEM ARCHITECTURE



**USER RADIOS:
UP TO 3000 PER SITE**

TRUNKING AIR INTERFACE

UP TO 250 SITES

**UP TO 15 REPEATERS
PER SITE**

**UP TO 6 ADDITIONAL
DATA REPEATERS PER SITE**

IP INTERCONNECT

**CAPACITY MAX
SYSTEM SERVER**

**RADIO MANAGEMENT
AND SYSTEM
ADVISOR CLIENTS**

APPLICATIONS

HIGH CAPACITY, COVERAGE AND CONTROL

HIGH PERFORMANCE

Capacity Max has a fast, responsive user experience with robust performance under load and rapid and smooth roaming across sites. With Capacity Max, security is built in with options for authentication, access control, and encryption as standard. And to ensure optimum operation, Capacity Max incorporates sophisticated fault management and call monitoring tools.

EFFICIENT

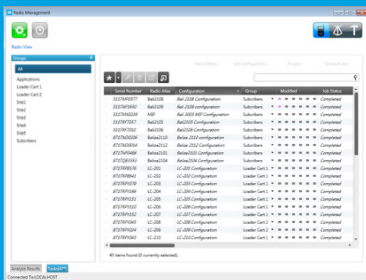
The system is built around a standardised IP network: there is no requirement for specialised interconnections. Signalling and traffic flow has been optimised to make the most efficient use of network bandwidth. The Capacity Max System Server (CMSS) centralises control and management functions, as well as hosting voice applications gateways.

SCALABLE

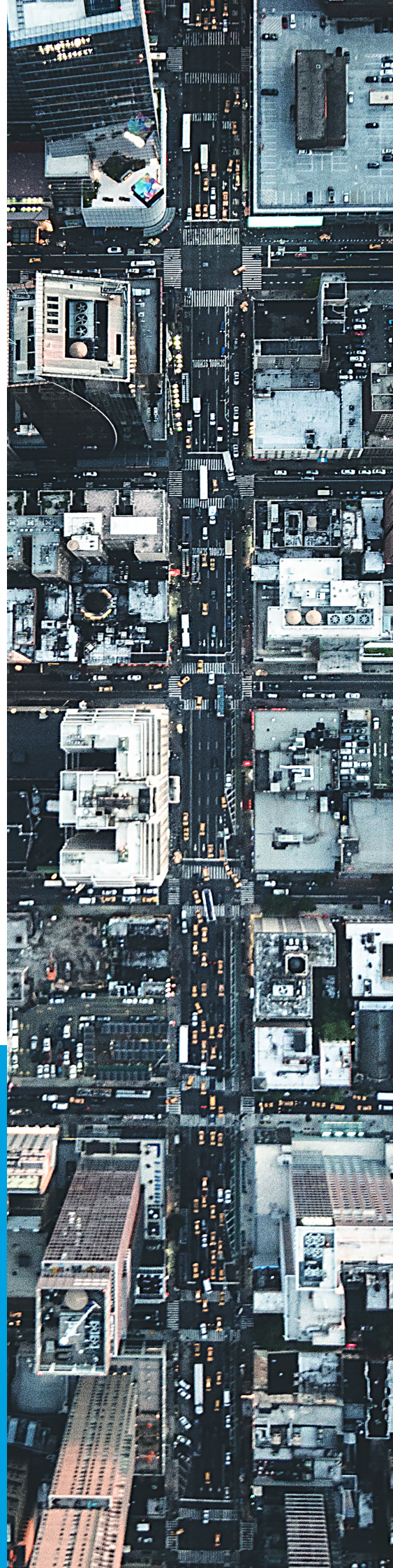
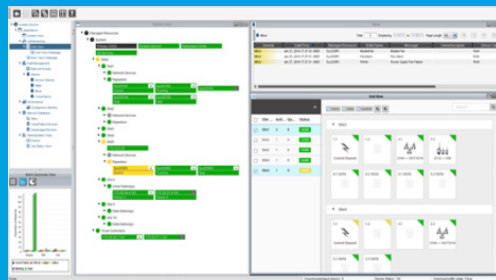
Capacity Max is scalable to 250 sites, with up to 15 voice and data repeaters and up to 6 additional data-only repeaters per site, giving high-quality connectivity to up to 3,000 users at each location.

The system uses standardised infrastructure, so you can migrate to Capacity Max from a MOTOTRBO IP Site Connect, Capacity Plus or Connect Plus system and reuse your earlier investment.

RADIO MANAGEMENT



SYSTEM ADVISOR



RADIO COMPATIBILITY



DP3000e Series

DP4000e Series

DP4000 Ex Series

SL4010e

ION

DM4000e Series

APPLICATIONS

Capacity Max supports a broad ecosystem of voice and data applications from the MOTOTRBO Application Developer Program.

For Control Room Solutions, Capacity Max supports **SmartPTT PLUS** and **TRBOnet PLUS**.



To find out more about Capacity Max, visit motorolasolutions.com/mototrbo

Motorola Solutions Ltd. Nova South, 160 Victoria Street, London, SW1E 5LB, United Kingdom.

Availability is subject to individual country law and regulations. All specifications shown are typical unless otherwise stated and are subject to change without notice.

MOTOROLA, MOTO, MOTOROLA SOLUTIONS and the Stylized M Logo are trademarks or registered trademarks of Motorola Trademark Holdings, LLC and are used under license. All other trademarks are the property of their respective owners. © 2021 Motorola Solutions, Inc. All rights reserved. (08-21)

